

Pickell Architecture, LLC  
 115 Main Street  
 Flemington, New Jersey 08822  
 Phone: 908 788 0048  
 pickellarchitecture.com

Christopher Pickell, AIA  
 NJ: AI 10409  
 NY: 027694-1  
 PA: RA 015382-B

Zone: R2  
 Block 364 Lots 22.01,  
 22.02, 22.03, 22.04  
 Ewing Township  
 Mercer County  
 New Jersey

Proposed New Duplex Homes for  
**Homes by TLC, Inc.**  
 1219 Lower Ferry Road  
 Ewing, New Jersey 08638



Issues & Revisions:  
 Issued for Review 10/28/22

Copyright 2022  
 Pickell Architecture LLC

Proposed  
 Zoning  
 Plan

**A1**

1219 Lower Ferry  
 October 28, 2022  
 Sheet 1 of 1



SIDE (NORTH) ELEVATION  
 DUPLEX 'A', DUPLEX 'B' OPPOSITE HAND



REAR (WEST) ELEVATION  
 DUPLEX 'A', DUPLEX 'B' OPPOSITE HAND



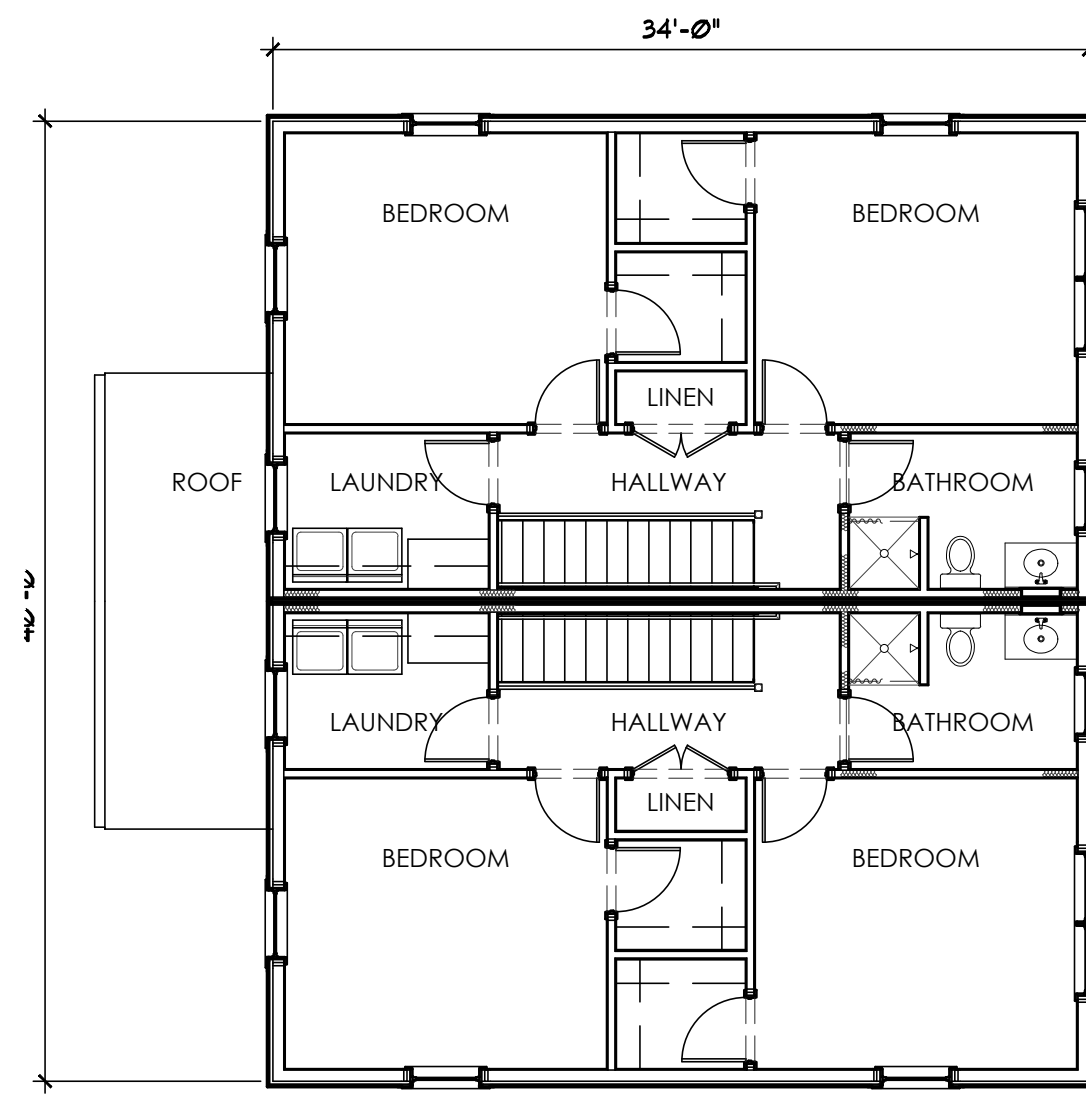
SIDE (SOUTH) ELEVATION  
 DUPLEX 'A', DUPLEX 'B' OPPOSITE HAND



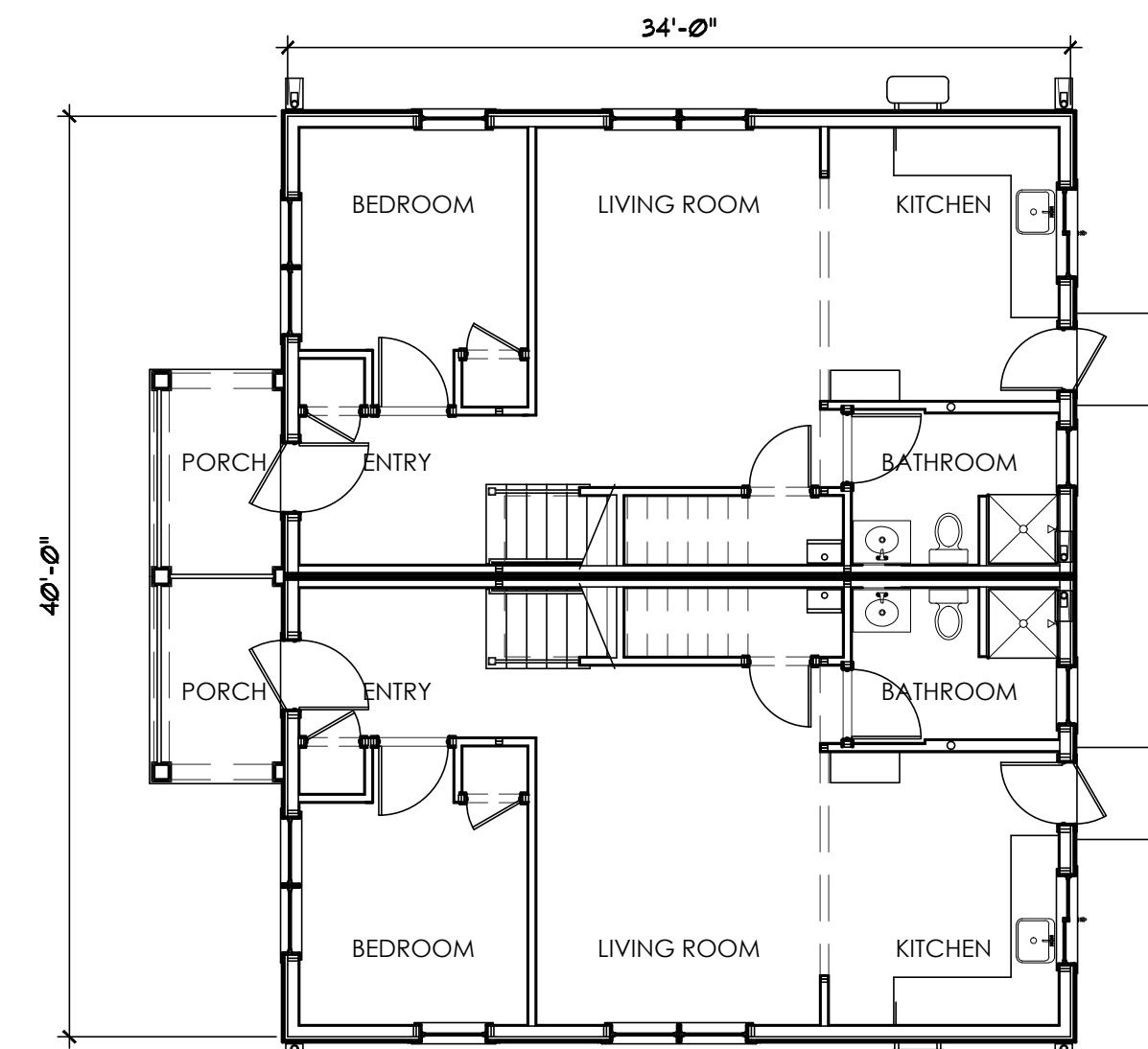
FRONT (EAST) ELEVATION  
 DUPLEX 'A', DUPLEX 'B' OPPOSITE HAND

- 1 EXTERIOR MATERIAL KEY  
 ALL COLORS AS SELECTED
- 1 ROOF SHINGLES ASPHALT
  - 2 GUTTERS and DOWNSPOUTS ALUMINUM
  - 3 CLAPBOARD SIDING HARDYPLANK - 7" EXPOSURE
  - 4 1x SYNTHETIC TRIM BOARDS PRE-FINISHED HARDYBOARD
  - 5 SYNTHETIC STONE VENEER ADHERED 2" THICKNESS PATTERNS AS SELECTED
  - 6 PORCH COLUMNS SEE DETAILS ON A4.1
  - 7 GUARDRAILS SEE DETAILS ON A4.1
  - 8 SHUTTERS 2 PANEL DESIGN

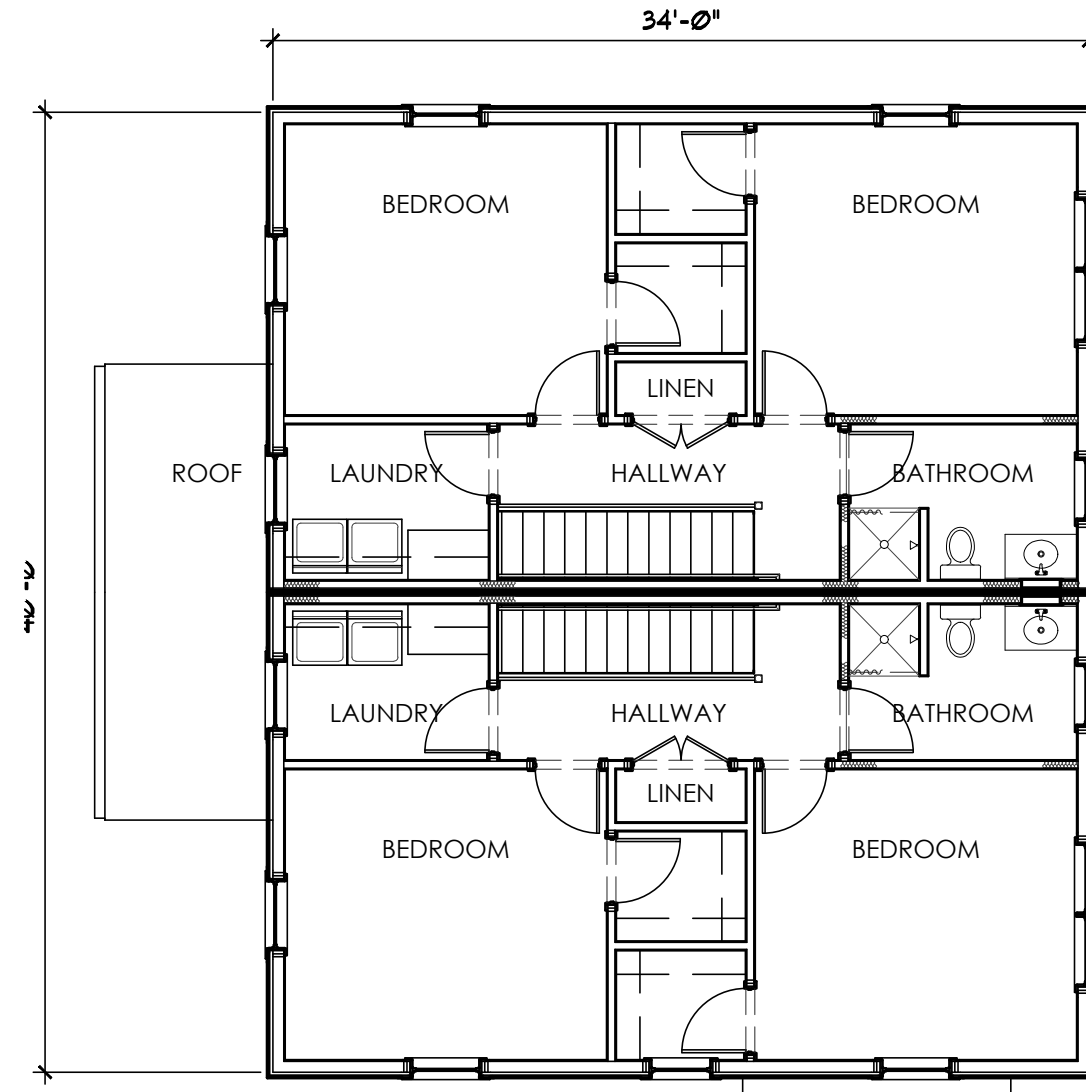
3 Exterior Elevations  
 Z1 Scale: 1/8" = 1'-0"



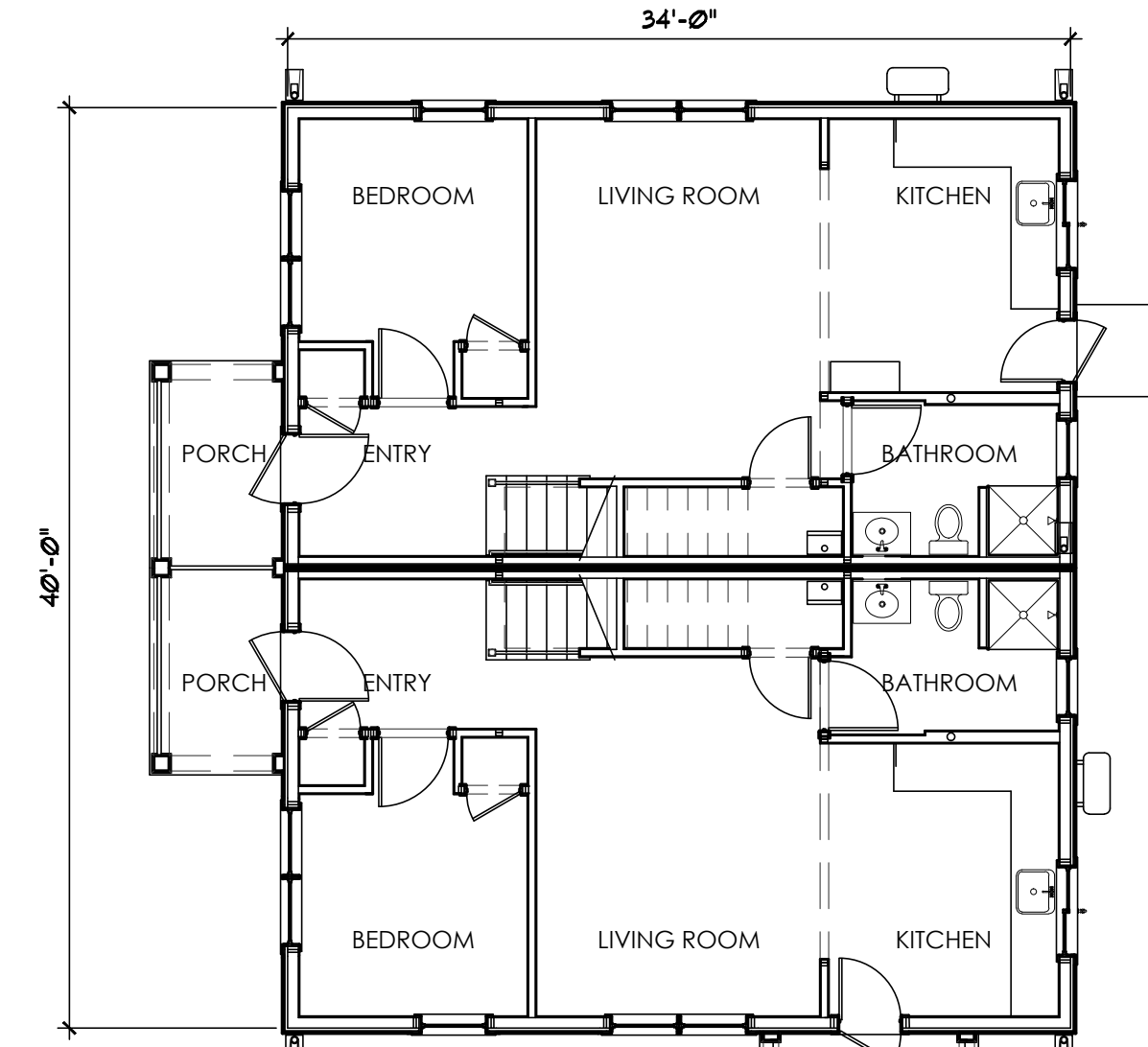
SECOND FLOOR PLANS  
 DUPLEXES 'C' & 'D'



FIRST FLOOR PLANS  
 DUPLEXES 'C' & 'D'

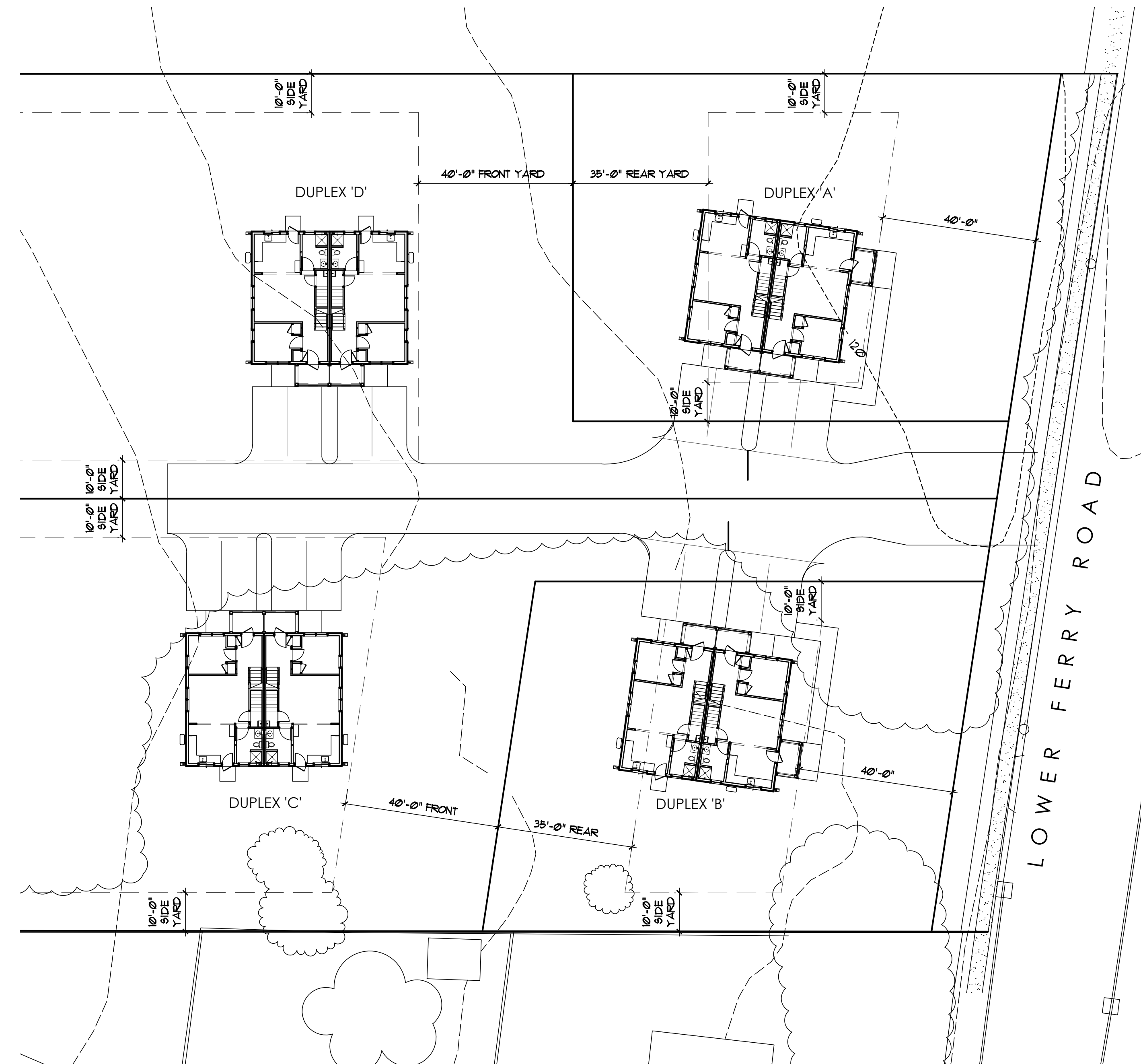


SECOND FLOOR PLANS  
 DUPLEXES 'A' & 'B'



FIRST FLOOR PLANS  
 DUPLEXES 'A' & 'B'

2 Floor Plans  
 Z1 Scale: 1/8" = 1'-0"



1 Architectural Site Plan  
 Z1 Scale: 1" = 20'-0"

