

REV	DATE	DESCRIPTION
1	08/01/16	ISSUED FOR PHASE SUBMISSION
2	08/01/16	ISSUED FOR NEAR, BACK AND MIDDLE SUBMISSION
3	08/01/16	ISSUED FOR TOWNSHIP SUBMISSION
4	08/01/16	ISSUED FOR REGULATORY COMPLIANCE
5	08/01/16	ISSUED FOR PHASE SUBMISSION
6	08/01/16	ISSUED FOR PHASE SUBMISSION
7	08/01/16	ISSUED FOR PHASE SUBMISSION
8	08/01/16	ISSUED FOR PHASE SUBMISSION
9	08/01/16	ISSUED FOR PHASE SUBMISSION
10	08/01/16	ISSUED FOR PHASE SUBMISSION
11	08/01/16	ISSUED FOR PHASE SUBMISSION
12	08/01/16	ISSUED FOR PHASE SUBMISSION
13	08/01/16	ISSUED FOR PHASE SUBMISSION
14	08/01/16	ISSUED FOR PHASE SUBMISSION
15	08/01/16	ISSUED FOR PHASE SUBMISSION
16	08/01/16	ISSUED FOR PHASE SUBMISSION
17	08/01/16	ISSUED FOR PHASE SUBMISSION
18	08/01/16	ISSUED FOR PHASE SUBMISSION
19	08/01/16	ISSUED FOR PHASE SUBMISSION
20	08/01/16	ISSUED FOR PHASE SUBMISSION
21	08/01/16	ISSUED FOR PHASE SUBMISSION
22	08/01/16	ISSUED FOR PHASE SUBMISSION
23	08/01/16	ISSUED FOR PHASE SUBMISSION
24	08/01/16	ISSUED FOR PHASE SUBMISSION
25	08/01/16	ISSUED FOR PHASE SUBMISSION
26	08/01/16	ISSUED FOR PHASE SUBMISSION
27	08/01/16	ISSUED FOR PHASE SUBMISSION
28	08/01/16	ISSUED FOR PHASE SUBMISSION
29	08/01/16	ISSUED FOR PHASE SUBMISSION
30	08/01/16	ISSUED FOR PHASE SUBMISSION
31	08/01/16	ISSUED FOR PHASE SUBMISSION
32	08/01/16	ISSUED FOR PHASE SUBMISSION
33	08/01/16	ISSUED FOR PHASE SUBMISSION
34	08/01/16	ISSUED FOR PHASE SUBMISSION
35	08/01/16	ISSUED FOR PHASE SUBMISSION
36	08/01/16	ISSUED FOR PHASE SUBMISSION
37	08/01/16	ISSUED FOR PHASE SUBMISSION
38	08/01/16	ISSUED FOR PHASE SUBMISSION
39	08/01/16	ISSUED FOR PHASE SUBMISSION
40	08/01/16	ISSUED FOR PHASE SUBMISSION
41	08/01/16	ISSUED FOR PHASE SUBMISSION
42	08/01/16	ISSUED FOR PHASE SUBMISSION
43	08/01/16	ISSUED FOR PHASE SUBMISSION
44	08/01/16	ISSUED FOR PHASE SUBMISSION
45	08/01/16	ISSUED FOR PHASE SUBMISSION
46	08/01/16	ISSUED FOR PHASE SUBMISSION
47	08/01/16	ISSUED FOR PHASE SUBMISSION
48	08/01/16	ISSUED FOR PHASE SUBMISSION
49	08/01/16	ISSUED FOR PHASE SUBMISSION
50	08/01/16	ISSUED FOR PHASE SUBMISSION
51	08/01/16	ISSUED FOR PHASE SUBMISSION
52	08/01/16	ISSUED FOR PHASE SUBMISSION
53	08/01/16	ISSUED FOR PHASE SUBMISSION
54	08/01/16	ISSUED FOR PHASE SUBMISSION
55	08/01/16	ISSUED FOR PHASE SUBMISSION
56	08/01/16	ISSUED FOR PHASE SUBMISSION
57	08/01/16	ISSUED FOR PHASE SUBMISSION
58	08/01/16	ISSUED FOR PHASE SUBMISSION
59	08/01/16	ISSUED FOR PHASE SUBMISSION
60	08/01/16	ISSUED FOR PHASE SUBMISSION
61	08/01/16	ISSUED FOR PHASE SUBMISSION
62	08/01/16	ISSUED FOR PHASE SUBMISSION
63	08/01/16	ISSUED FOR PHASE SUBMISSION
64	08/01/16	ISSUED FOR PHASE SUBMISSION
65	08/01/16	ISSUED FOR PHASE SUBMISSION
66	08/01/16	ISSUED FOR PHASE SUBMISSION
67	08/01/16	ISSUED FOR PHASE SUBMISSION
68	08/01/16	ISSUED FOR PHASE SUBMISSION
69	08/01/16	ISSUED FOR PHASE SUBMISSION
70	08/01/16	ISSUED FOR PHASE SUBMISSION
71	08/01/16	ISSUED FOR PHASE SUBMISSION
72	08/01/16	ISSUED FOR PHASE SUBMISSION
73	08/01/16	ISSUED FOR PHASE SUBMISSION
74	08/01/16	ISSUED FOR PHASE SUBMISSION
75	08/01/16	ISSUED FOR PHASE SUBMISSION
76	08/01/16	ISSUED FOR PHASE SUBMISSION
77	08/01/16	ISSUED FOR PHASE SUBMISSION
78	08/01/16	ISSUED FOR PHASE SUBMISSION
79	08/01/16	ISSUED FOR PHASE SUBMISSION
80	08/01/16	ISSUED FOR PHASE SUBMISSION

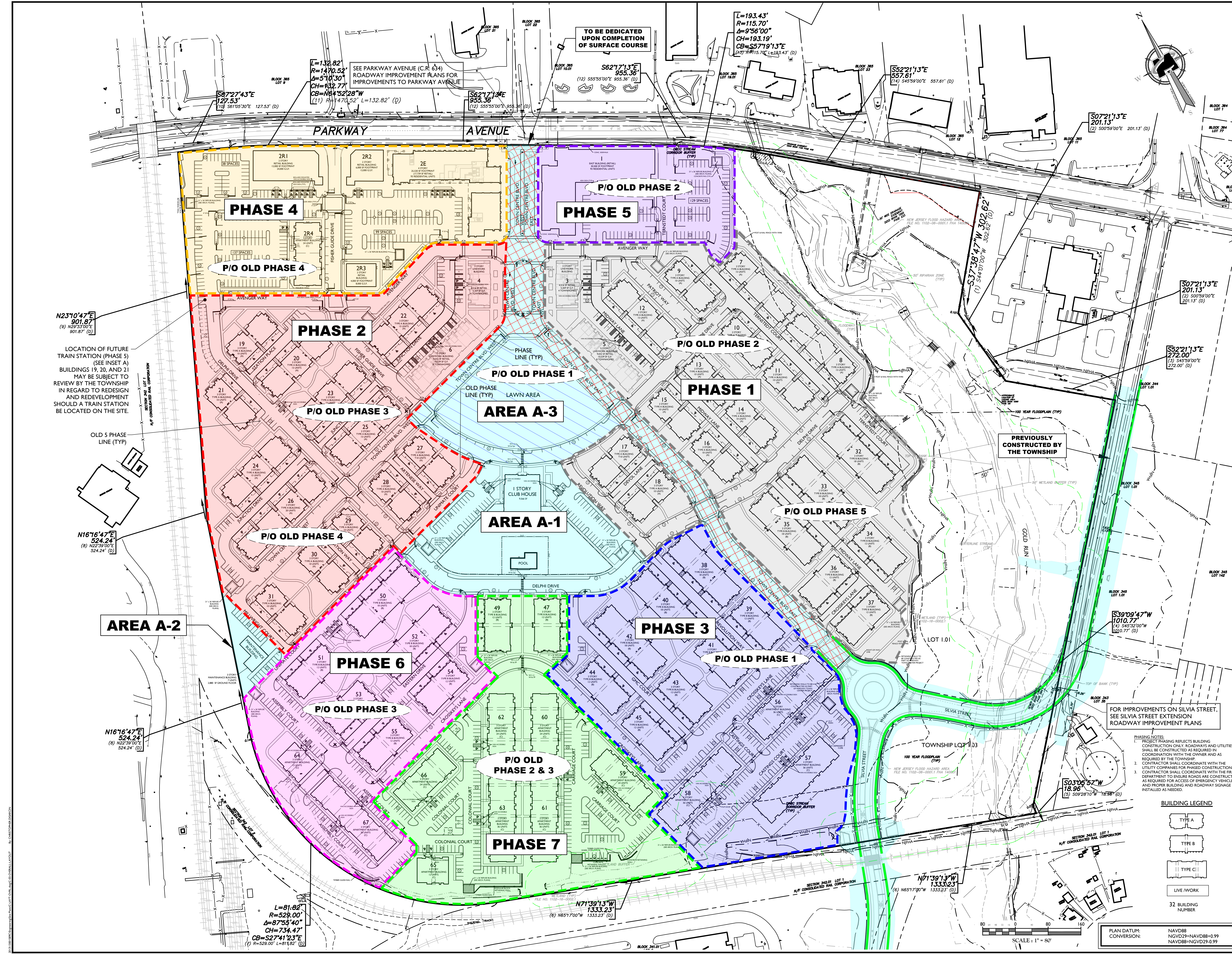
JULIA G. ALGOE
 NEW JERSEY PROFESSIONAL
 ENGINEER - LICENSE NUMBER: GE4313

**PRELIMINARY & FINAL
 SUBDIVISION**
 FOR
**EWING TOWN
 CENTER**

BLOCK 343
 LOT 1.01
 TOWNSHIP OF EWING
 MERCER COUNTY
 NEW JERSEY

HAMILTON OFFICE
 1000 Waterview Drive
 Suite 201
 Hamilton, NJ 08691
 Phone: 609.587.8200
 Fax: 609.587.8260

SCALE: AS SHOWN DATE: 08/05/16 DRAWN BY: ADL CHECKED BY: MSJ
 PROJECT NUMBER: 1300158PC DRAWING NAME: CLAYT-OVERL
 SHEET TITLE: OVERALL DIMENSION AND PHASING PLAN
 SHEET NUMBER: 3 of 60



LOCATION OF FUTURE TRAIN STATION (PHASE 5) (SEE INSET A) BUILDINGS 19, 20, AND 21 MAY BE SUBJECT TO REVIEW BY THE TOWNSHIP IN REGARD TO REDESIGN AND REDEVELOPMENT SHOULD A TRAIN STATION BE LOCATED ON THE SITE.

OLD 5 PHASE LINE (TYP)

SECTION 34.01 LOT 1
 M/P CONSOLIDATED REAL CORPORATION

L=81.82'
R=529.00'
Δ=87°55'40"
CH=734.47'
CB=S27°41'23"E
(1) R=529.00' L=81.82' (D)