

What is the Open Space and Recreation Plan?

Ewing Township's Open Space and Recreation Plan will serve as a "blueprint" for the future of its parks and recreation system. As an element of the Township Master Plan, the document will communicate the Township's vision for current and future park facilities and make recommendations to guide Township policies, capital expenditures, and decisions by the Planning Board and Zoning Board. The planning process undertaken by L&G Planning will consist of the following components:

1. **Community outreach** through surveys, focus groups, and public hearings;
2. **Documentation** of existing parks and recreation facilities, trends, and opportunities;
3. **Analysis** of current and future park needs;
4. **Recommendation** of strategies to meet Township goals and objectives; and
5. **Adoption** of the plan by the Planning Board.

Through the Open Space and Recreation Plan, Ewing Township will continue to form an integrated system of open space that is sufficiently diverse and comprehensive to protect natural areas and provide sources of recreation for all residents. The ultimate goal is to deliver an adequate supply of park and recreation facilities that is connected to schools, public transit, bicycle and pedestrian routes, surrounding neighborhoods, and economic activity. The Open Space and Recreation Plan will therefore identify specific needs and desires of the community and recommend appropriate solutions according to open space and recreation standards, population projections, and public input.

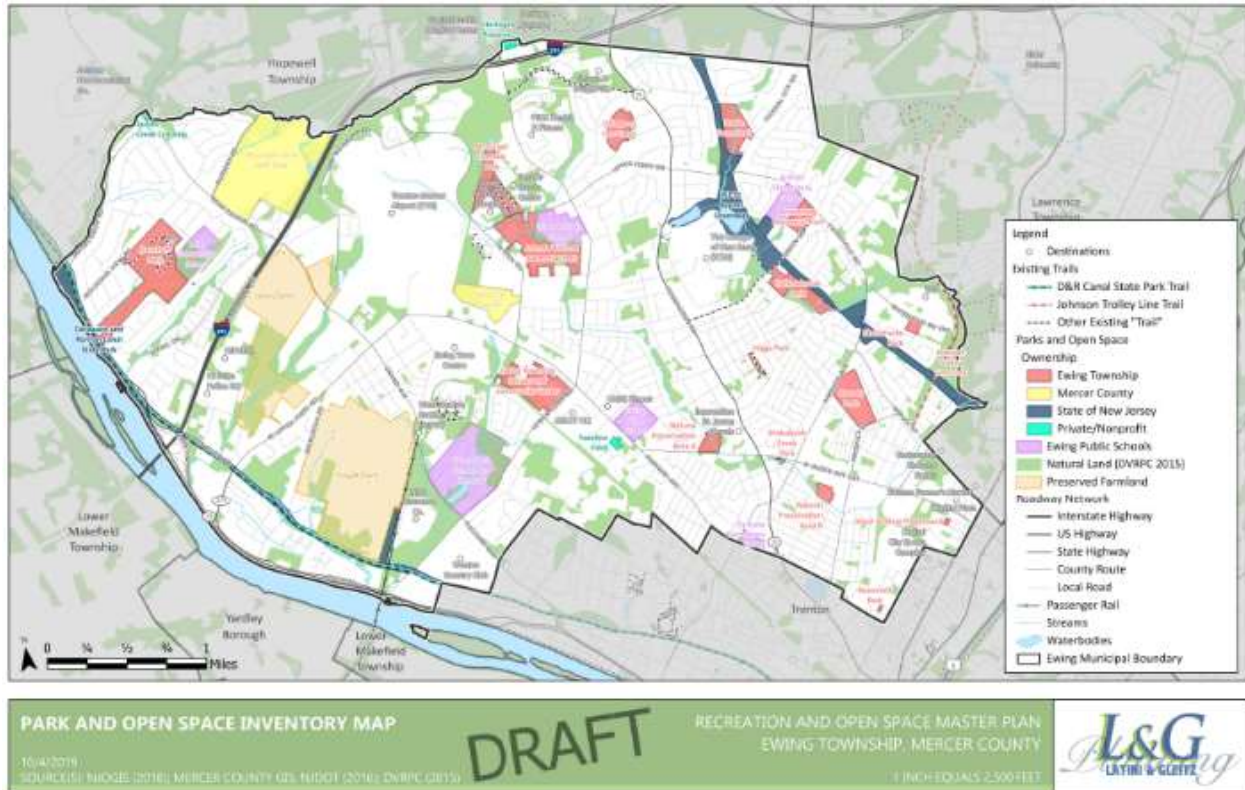
Plan Scope

Effective open space and recreation planning touches upon several areas of focus and warrants a wide approach to long-term planning. Recommendations of the Open Space and Recreation Plan will therefore address various topics beyond recreation including sustainability, land use, circulation, historic preservation, public health, and economic development. Based on analysis and goal-setting, the Plan will propose strategies for achieving the following objectives:

1. Identifying potential lands for recreation;
2. Identifying potential lands for conservation;
3. Enhancing greenways and natural corridors;
4. Improving bicycle and pedestrian connectivity;
5. Facilitating improvements of existing parks, open spaces, and facilities;
6. Identifying opportunities for additional park space;
7. Identifying opportunities for public and private partnerships; and
8. Further integration with the goals and objectives of the Township Master Plan

Plan Summary

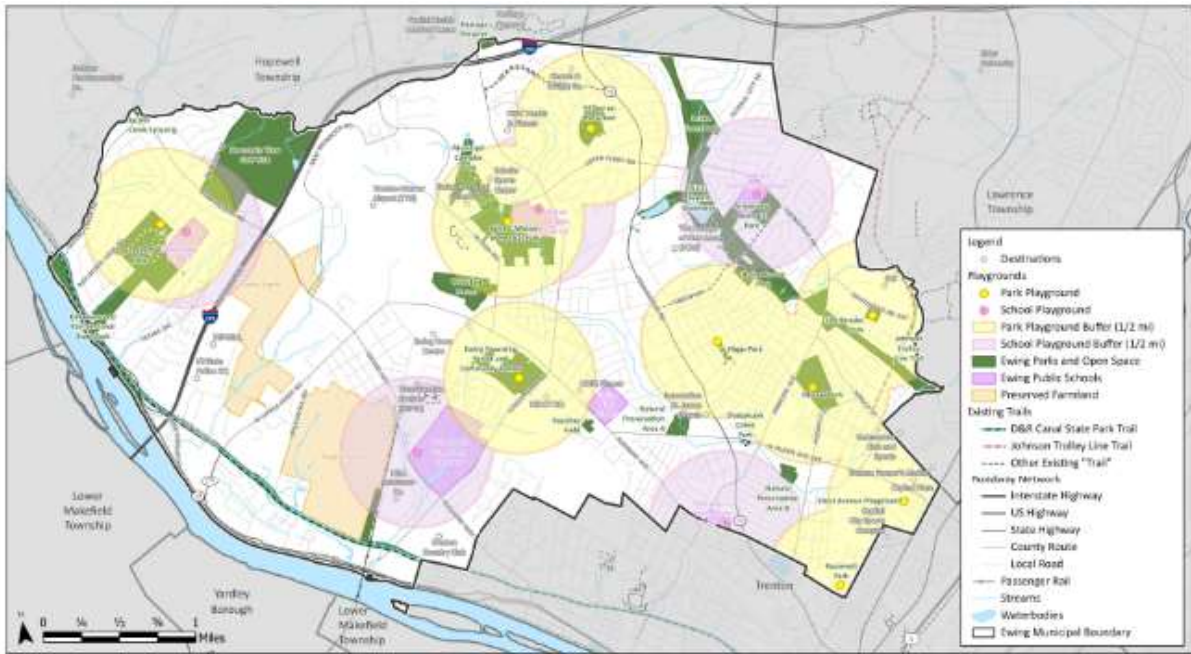
A diverse and growing system of parks in Ewing Township serves a wide range of recreational and conservation purposes. The Township currently has a total of 25 preserved parks and open spaces comprising 998 acres of municipal, county, state, and private land. An inventory of existing facilities, summarized in the table and maps below, provides a baseline understanding of Township assets before recommendations may be made for improvement.



Municipal Park Inventory		
Location	Size (Acres)	Amenities
Armstrong Memorial Park	12.88	1 outdoor batting cage, 2 adult softball fields, 3 youth softball fields, 1 tee-ball field
Banchoff Park	98.87	8,000sf dog park, multi-use paths, 280,000sf lawn, picnic area, playground equipment, 4 tennis courts, pond, natural area
Drake Farm Park	26.44	Historic house-museum, apple orchard, natural area

Ewing Township Senior and Community Center	42.53	1 youth basketball court, 1 adult basketball court, 2 tennis courts, playground equipment, swings, swimming pool complex (5-lane pool, kiddie pool, 2 shallow pools), splash pad, sand volleyball court
Higgs Park	3.02	Playground equipment, swings, gazebo, 1 youth basketball court, picnic and grill area, natural area, multi-use paths, 15,000sf lawn
Hollowbrook Park	25.65	Community center, swimming pool, natural area
John S. Watson Park	60.19	1 outdoor roller-hockey rink, 1 adult softball field picnic pavilion, picnic tables, playground equipment, swings
Johnson Trolley Line Trail	3.21	5,000ft multi-use path, natural area
Moody Park	32.49	3 youth basketball courts, 3 adult basketball courts, 2 football fields, 1 hardball field, indoor batting cages, 2 little-league fields, 1 adult softball field, 1 tee-ball field, 4 bullpens, playground equipment, swings
Municipal Complex Park	31.88	2,200ft multi-use path loop, picnic pavilion, picnic tables, gazebo, 3 youth soccer fields, 2 adult soccer fields, 30,000sf lawn
Roosevelt Park	0.38	1 youth basketball court, playground equipment, swings
Shabakunk Creek Park	0.98	Lawn, 340ft multi-use path, benches
Sherbrooke Park	3.92	50,000sf community garden, playground equipment, swings, 1 youth basketball court, 25,000sf lawn
Stout Avenue Playground	0.76	15,000sf lawn, playground equipment, swings
Village on the Green	17.93	420,000sf lawn, picnic table, playground equipment, swings
Municipal Park Area	361.13	

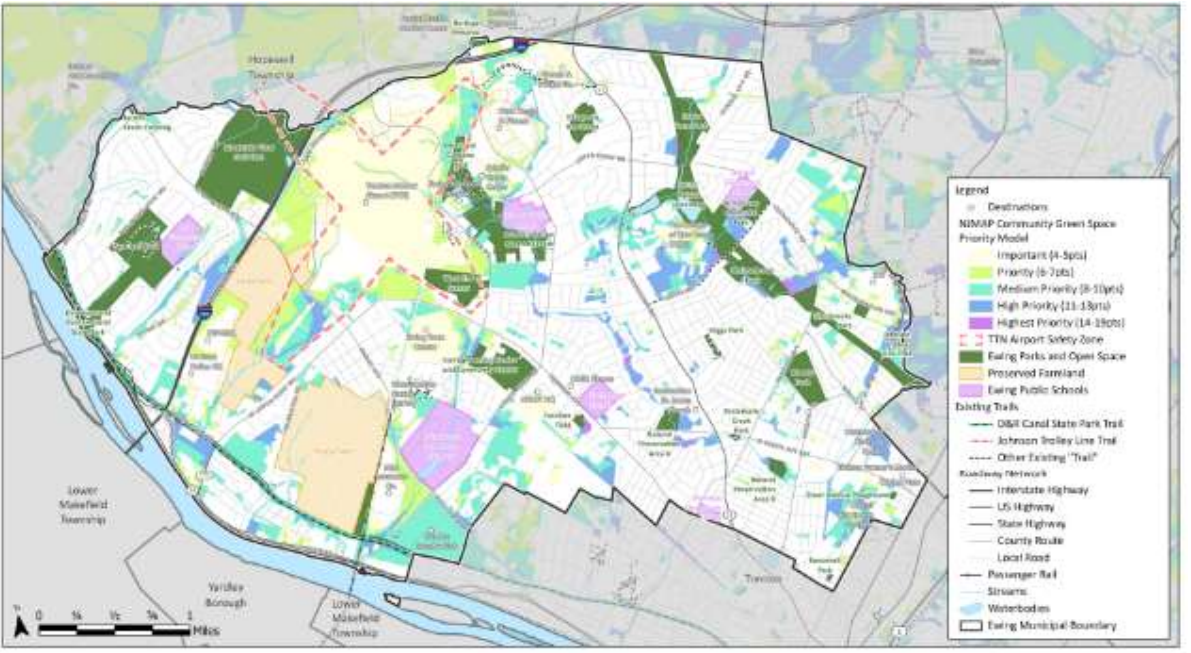
Based on inventory, mapping, and institutional standards, this Plan will help identify gaps in services and provision of park facilities. Analysis of playground service areas, as shown by the Playground Inventory Map, reveals areas that pose opportunities for improving local access to playground equipment. Likewise, the Conservation Opportunities Map identifies potential areas for conservation based on environmental resources, existing land use, proximity to existing community assets, and other factors that can help Ewing Township prioritize lands for new parks and open space. Through partnerships, land acquisition, and other mechanisms, these opportunities will maximize the public's benefit from recreational and environmental assets.



PLAYGROUND INVENTORY MAP **DRAFT** RECREATION AND OPEN SPACE MASTER PLAN EWING TOWNSHIP, MERCER COUNTY

10/4/2019
 SOURCES: NJDCS (2018), MERCER COUNTY GIS, NJDOT (2016), CNRPC (2018)

1 INCH EQUALS 2,500 FEET

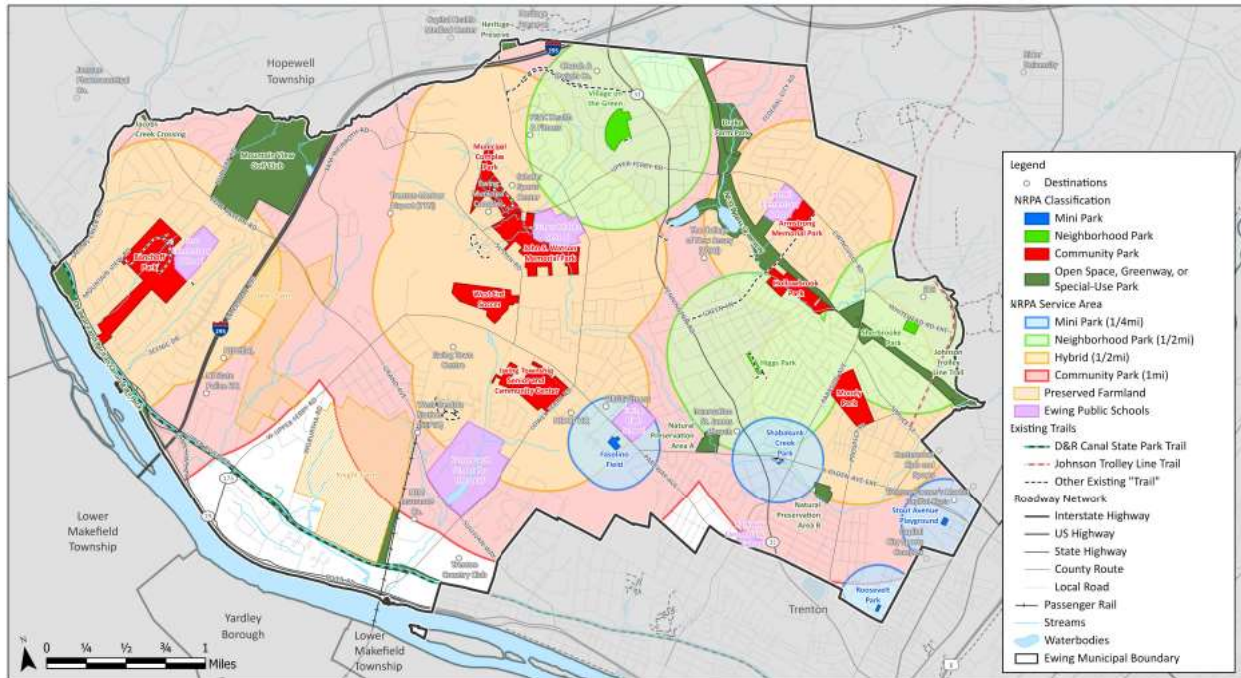


CONSERVATION OPPORTUNITIES MAP **DRAFT** RECREATION AND OPEN SPACE MASTER PLAN EWING TOWNSHIP, MERCER COUNTY

10/4/2019
 SOURCES: NJDCS (2018), MERCER COUNTY GIS, NJDOT (2016), CNRPC (2018), TTN AIRPORT SAFETY ZONE (2018)

1 INCH EQUALS 2,500 FEET

Baseline standards will also help determine appropriate improvements for the future as shown in the NRPA Standards Map. The National Recreation and Parks Association (NRPA) breaks down parks by size, use, and service area and recommends a specified number of each park per 1,000 residents. As Ewing Township’s population continues to grow, use of NRPA and other standards will encourage responsive long-term planning. However, balancing these standards with community input will paint the full picture of any needs or opportunities for improvement.



NRPA STANDARDS MAP
 10/4/2019
 SOURCE(S): NJGIS (2018); MERCER COUNTY GIS; NJDOT (2016); DVRPC (2015)

DRAFT

RECREATION AND OPEN SPACE MASTER PLAN
 EWING TOWNSHIP, MERCER COUNTY

1 INCH EQUALS 2,500 FEET

Availability of Municipal Parks and Open Space (excluding state, county, and private parks)						
	Standard Description (Minimum)	Recommended Area	Minimum Area	Existing Area	Balance	Minimum Balance
NJ Balanced Land Use Standard*	3% of developed and developable area	285.24	N/A	466.03	180.79	N/A
NRPA Standard**						
Mini Parks	0.5 acres/1,000 pop. (0.25)	18.22	9.11	4.35	-13.87	-4.76
Neighborhood Parks	2 acres/1,000 pop. (1)	72.87	36.44	24.87	-48.00	-11.57
Community Parks	8 acres/1,000 pop. (5)	291.50	182.19	314.72	23.23	132.54

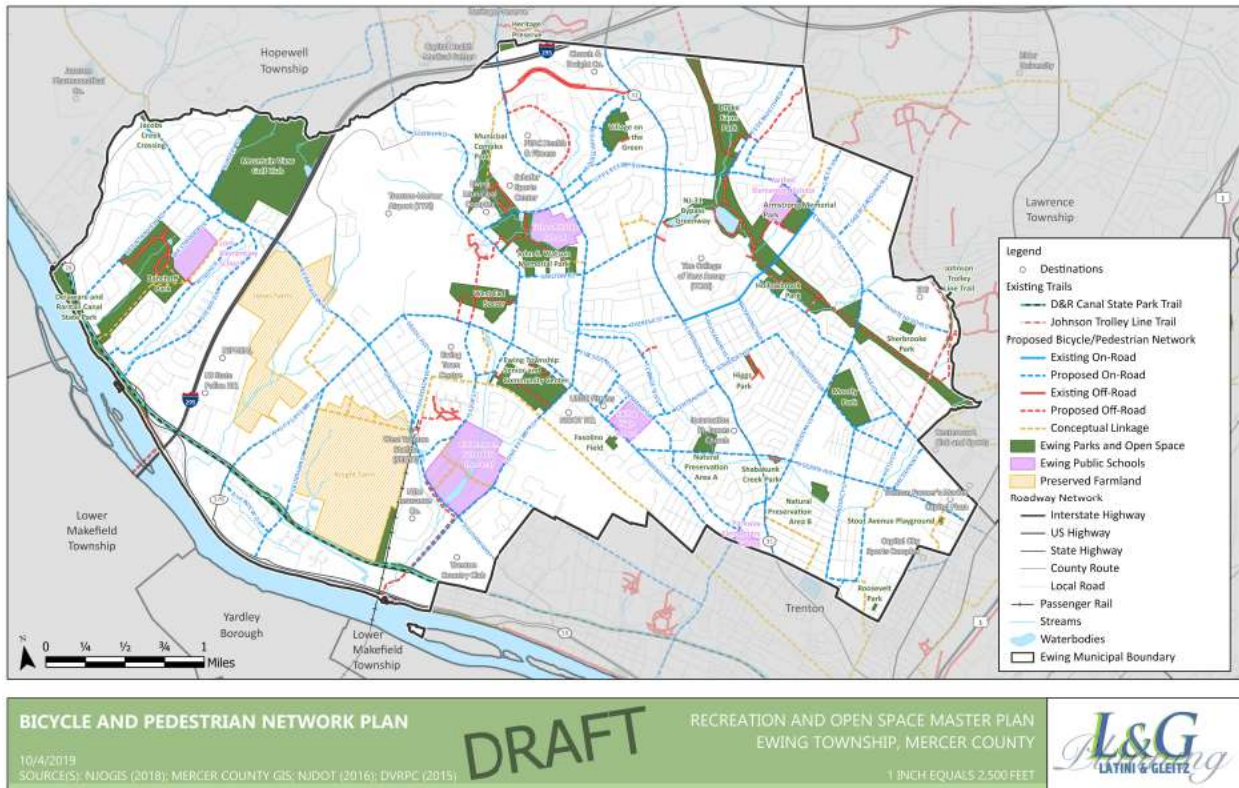
* Developable area calculated based on NJDEP 2012 Land Use Land Cover GIS Dataset

** Assessments based on 2013-2017 American Community Survey 5-Year Estimate, 36,437

In addition to an analysis of general park types, the Plan will also consider specific facilities and uses for each park. One method to determine adequate park facilities is to compare existing inventory to standards developed by NRPA for facilities per population, shown in the table below. The estimated surplus or deficit of each park facility category determined by NRPA standards provides a general idea of which facilities may be undersupplied based on the national average. However, NRPA notes that these standards are recommendations and do not reflect local community needs. For instance, some communities may play lacrosse or cricket while others may not. It is therefore prudent that the Township continually identify the specific recreational needs of the community and take appropriate action to meet them as it has long done the past. In the Open Space and Recreation Plan, these findings will be factored into concept redesign plans for each park in the Township.

NRPA Facility Standards (includes publicly accessible school facilities)						
Activity	NRPA Standard (Facilities/1,000 pop.)	Current NRPA Need	Existing Facilities	Current Net	2040 NRPA Need	2040 Net
Baseball (adult)	0.1	3.6	4	0.4	3.8	0.2
Baseball (youth)	0.12	4.4	1	-3.4	4.6	-3.6
Basketball (adult)	0.5	18.2	1	-11.2	19.1	-12.1
Basketball (youth)			6			
Football	0.1	3.6	1	-2.6	3.8	-2.8
Golf	0.04	1.5	1	-0.5	1.5	-0.5
Lacrosse			2			
Outdoor Theater	0.05	1.8	0	-1.8	1.9	-1.9
Picnic Shelters	0.5	18.2	3	-15.2	19.1	-16.1
Playground Areas (2-5)	0.5	18.2	11	5.8	19.1	4.9
Playground Areas (5-12)			13			
Soccer (adult)	0.33	12.0	6	-6.0	12.6	-6.6
Soccer (youth)	0.2	7.3	8	0.7	7.6	0.4
Softball (adult)	0.33	12.0	5	-7.0	12.6	-7.6
Softball (youth)	0.2	7.3	3	-4.3	7.6	-4.6
Swimming Pool	0.1	3.6	3	-0.6	3.8	-0.8
Tee-ball			1			
Tennis	0.5	18.2	12	-6.2	19.1	-7.1
Volleyball	0.33	12.0	1	-11.0	12.6	-11.6
Trail Miles (Bicycle/Jogging)	0.5	18.2	5.5	-12.8	19.1	-13.7

In addition to recreational park amenities and conservation, the Open Space Plan will make recommendations regarding improvements to bicycle and pedestrian connectivity via a proposed Bicycle and Pedestrian Network Plan. As a component of the Open Space Plan, the proposed network will guide future spending on roadway and off-road improvements that will increase safety and provide additional opportunities for jogging and biking to parks, schools, and other destinations. A preliminary network plan has been drafted based on road type, access to community facilities and regional trails, and existing constraints to provide thorough coverage throughout the Township.



Finally, the Ewing Township Open Space and Recreation Plan will include detailed mini-master plans for each park facility. L&G Planning will be working directly with the surrounding neighborhoods as well as the users of each park to develop a program of future improvements and maintenance needs. Provided below are links to each park.

- [Maps](#)
- [Aerials](#)